

NOTES:

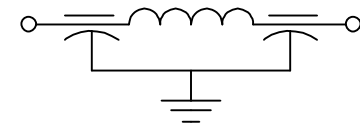
1. SUGGESTED MOUNTING HOLE: $\phi .221$
2. HARDWARE IS INCLUDED

CAPACITANCE	5000 pF GMV
TEMP. RANGE	-55°C TO +125°C
CURRENT	10 AMPS
WORKING VOLTAGE	85°C 200 VDC 125°C 100 VDC
DC RESISTANCE	.01 OHMS MAX.

IL=PER MIL-STD-220, NO LOAD

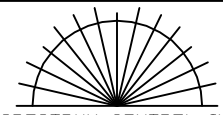
FREQ. MHz	I.L. (db)
10	20
50	--
100	65
1 GHz	70
10 GHz	70

SCHEMATIC



MARKING

PART: 1270025
 BAG: SCI
 1270-025
 DATE CODE
 LOT NO.
 QTY./BAG (200 MAX.)

	8	7	6	5	REV. NO.	TOLERANCES UNLESS OTHERWISE SPECIFIED	 SPECTRUM CONTROL INC. ERIE, FAIRVIEW PENNSYLVANIA
	CN 210694	CN 209176	CN 200615	CN 184990 REDRAWN	CHANGE NOTICE	Fractions $\pm 1/64$	
						Dec. .xx \pm	
						Dec. .xxx $\pm .010$	
						Angles $\pm 0^{\circ} 30'$	
						CODE IDENT. NO. DLSP2	Dwn. KAUFFMAN Ckd. 10/21/02 Scale NONE
							Description FILTER SING, PI, BSHG. 1270-025